

**AXXAIR**

[www.axxair.com](http://www.axxair.com)

V3.5-11-2014

# POWER SOURCES

POWER SOURCES



**MADE IN FRANCE**

**GLOBAL PROCESS**

**[www.axxair.com](http://www.axxair.com)**

# Power Sources



V3.5-11-2014

To run the complete welding process, all our power sources are fitted with a HIG colour touch screen ; The main functions are :

- Password protection
- Customized access according to the user : operator access to run the programs only, welder access to all customer functions, AXXAIR access for maintenance purposes.
- Auto compute mode for a quick set up according to the main welding characteristics : head type, tube diameter, tube thickness, welding mode, number of sectors, ...
- 200 welding programs, with 20 sectors, are stored on a Flash card
- Data acquisition : real welding data acquisition is made every second and recorded on the Flash card. 999 welding can be recorded on the card, before being overwritten if not downloaded on a PC.
- Axes synchronization : all the axes can be synchronized on the welding current pulse, allowing :
  - Step mode : speed pulsed with the current to get a better penetration while maintaining an effective control of the welding puddle.
  - Wire pulsed speed to feed the wire on the high level current and less on low current.
  - The oscillation synchronization allows the adjustment of the high current on the bevel by controlling the oscillation displacement time
- Parameters printing on the integrated printer
- Parameters printing on a PC through the Flash card
- Parameters control and alarm mode : safety mode for the heads in case of gaz absence or cooling failure. Alarms are recorded in order to check the integrity of a weld and remote access assistance.



## 220V - 115V



### Technical Specifications

#### SASL161 :

115V AC single-phase + earth, 50/60Hz ,  
I<sub>max</sub>=20A, Max. current 120 A, Power factor:  
120A-60%,100A-100%

#### SASL 160 :

230V AC single-phase + earth, 50/60Hz ,  
I<sub>max</sub>=26A, Max. current 165 A, Power factor:  
100 A, 100%

- Ideal for on-site work
- welding data acquisition system

•Supplied with a memory card with 200 programs, 20 levels each

#### Weight:

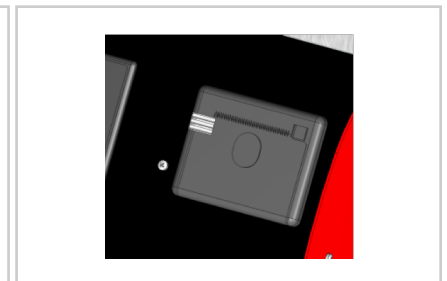
- SASL-16xTRA: 15 kg
- SASL-16xTF : 25 kg



SD Flash card with 200 programs per card



5.7" multi-language, colour touch screen



Integrated printer

### References

220V :  
SASL-160TRA : Air-cooled orbital welding TIG power source + board SATO80M/SP  
SASL-160T : Water-cooled welding power source + board for SATF/SATO  
SASL-160TF: Water-cooled welding power source + board for wire feed for SP/SAT

110V :  
SASL-161TRA : Air-cooled orbital welding TIG power source + board SATO80M/SP  
SASL-161T : Water-cooled welding power source + board for SATF/SATO  
SASL-161TF: Water-cooled welding power source + board for wire feed for SP/SAT

### Accessories

SACF-020: Memory card  
SALCF-020: memory card reader

### Consumables

SACW-C002: Coolant  
SIMP-02: printer spool for SASL



## 210A - Autoline

# AXXAIR

www.axxair.com

V3.5-11-2014



### Technical Specifications

- Orbital welding autoline, PFC compatible 110V -230V, 50/60hz, iMax =25A (220V), 30A(110V)
- Integrated **cooler**: 1400 W cooling capacity with 1L/min
- Cooling safety system: flow rate, pressure
- Max. current **210 A**
- Power factor: 160 A, 100%
- **Assistance for programs creation : welding passes presentation with autoComputing multi-passes**
- Supplied with a memory card with 200 programs, 20 levels each



5.7" colour touch screen remote control. Secure, multi-lingual access



Easy-to-use touch screen features parameter calculation



Safe cooling to protect heads (flow rate, level, pressure)

References	Accessories	Consumables
SASL-200MP : Water-cooled welding power source + board for SATF/SATO		
SASL-200MPEF : Water-cooled welding power source + board wire feed for SP	SAGC-300: power source trolley	SACW-C002: Coolant
SASL-200MPF : Water-cooled welding power source + board wire feed for SP/SAT	SACF-020: Memory card	SIMP-02: printer spool for SASL
SASL-200MPOAF : Water-cooled welding power source + board AVC/OSC/WIRE for SP/SAT	SALCF-020: memory card reader	



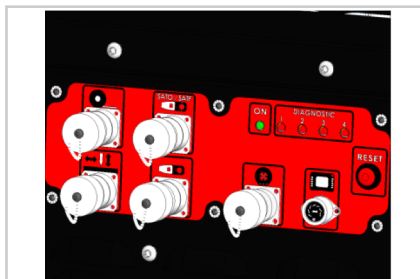


### Technical Specifications

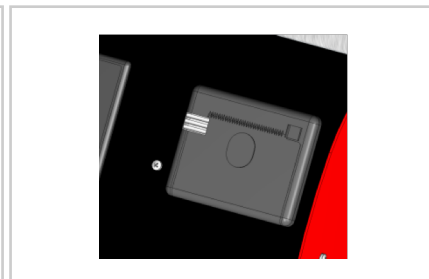
- Orbital welding power source, 400V +/-15% 3 phases + earth, 50/60Hz, I<sub>max</sub> = 24A
- Integrated **cooler**: 1400 W cooling capacity with 1L/min
- Cooling safety system: flow rate, pressure
- Max. current **300 A**
- Power factor: 210 A, 100%
- **Assistance for programs creation : welding passes presentation with autoComputing multi-passes**
- Supplied with a memory card with 200 programs, 20 levels each



5.7" colour touch screen remote control. Secure, multi-lingual access



Drives up to 4 shafts, depending on the version: wire feed, AVC, OSC and wire



References	Accessories	Consumables
SASL-300MPEF : Water-cooled welding power source + board wire feed for SP	SAGC-300: power source trolley	SACW-C002: Coolant
SASL-300MPF : Water-cooled welding power source + board wire feed for SP/SAT	SACF-020: Memory card	SIMP-02: printer spool for SASL
SASL-300MPOAF : Water-cooled welding power source + board AVC/OSC/WIRE for SP/SAT	SALCF-020: memory card reader	





# Accessories

SACW-Co02



SADF2

SAGC-300



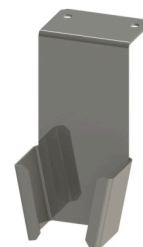
SIMP-02



SALCF-020



SACF-020



SAGC-121



Accessories	Accessories
SAGC-300 : trolley for SASL-300/200	SACW-Co02: cooling fluid
SAGC-121 : closed head support	SACF-020: flash card with software
SADF2 : External Wire feeder	SALCF-020: Flash card reader
	SIMP-02: printer paper for SASL



# POWER SOURCES

## Compatibility table with heads and accessories

	SC121-A	SC121-E	SC171-A	SC171-E	SC221-E	SC321-E	SOAF ( Acc.)	SATF-40ND	SATF-65ND	SATF-115ND	SATO-80M	SATO-115NDA	SATO-170NDA	SATO-220NDA	SATO-115NAOA	SATO-170NAOA	SATO-220NAOA	SATP-80
SASL-160/161 TRA	O	N	O	N	N	N	N	N	N	N	O	N	N	N	N	N	N	N
SASL-160/161 T	O	O	O	O	O	O	N	O	O	O	O	O	O	O	N	N	N	N
SASL-160/161 TF	O	O	O	O	O	O	N	O	O	O	O	O	O	O	N	N	N	N
SASL-200MP	O	O	O	O	O	O	N	O	O	O	O	O	O	O	N	N	N	N
SASL-200MPEF	O	O	O	O	O	O	N	N	N	N	N	N	N	N	N	N	N	N
SASL-200MPF	O	O	O	O	O	O	N	O	O	O	O	O	O	O	N	N	N	O
SASL-200MPAOF	O	O	O	O	O	O	O	O	O	O	O	O	O	O	O	O	O	O
SASL-300MPEF	O	O	O	O	O	O	N	N	N	N	N	N	N	N	N	N	N	N
SASL-300MPF	O	O	O	O	O	O	N	O	O	O	O	O	O	O	N	N	N	O
SASL-300MPAOF	O	O	O	O	O	O	O	O	O	O	O	O	O	O	O	O	O	O

	SADF2	SAGC-300
		
SASL-160/161 TRA	N	N
SASL-160/161 T	N	N
SASL-160/161 TF	O	N
SASL-200MP	N	O
SASL-200MPEF	O	O
SASL-200MPF	O	O
SASL-200MPAOF	O	O
SASL-300MPEF	O	O
SASL-300MPF	O	O
SASL-300MPAOF	O	O

